

Model	Frequency	Elements	Gain	Front-Back Ratio
-------	-----------	----------	------	------------------

Fully Welded Gold Anodized VHF Models

YXXX3W	User Defined	3	7.1 dBd	17 dB
YXXX5W	User Defined	5	9.2 dBd	20 dB

Gold Anodized VHF Models

Y1363	136-150 MHz	3	7.1 dBd	17 dB
Y1365	136-150 MHz	5	9.2 dBd	20 dB
Y1503	150-174 MHz	3	7.1 dBd	17 dB
Y1505	150-174 MHz	5	9.2 dBd	20 dB
Y2203	220-250 MHz	3	7.1 dBd	17 dB
Y2205	220-250 MHz	5	9.2 dBd	20 dB

Fully Welded Gold Anodized UHF Models

Y4065	406-430 MHz	5	9.2 dBd	20 dB
Y4066	406-430 MHz	6	10.2 dBd	20 dB
Y4303	430-450 MHz	3	7.1 dBd	17 dB
Y4305	430-450 MHz	5	9.2 dBd	20 dB
Y4306	430-450 MHz	6	10.2 dBd	20 dB
Y43012	430-450 MHz	12	11 dBd	20 dB
Y4503	450-470 MHz	3	7.1 dBd	17 dB
Y4505	450-470 MHz	5	9.2 dBd	20 dB
Y4506	450-470 MHz	6	10.2 dBd	20 dB
Y45012	450-470 MHz	12	11 dBd	20 dB
Y4705	470-490 MHz	5	9.2 dBd	20 dB
Y4706	470-490 MHz	6	10.2 dBd	20 dB

Gold Anodized Fully Welded 800/900 MHz Models

Y8063	806-896 MHz	3	6 dBd	15 dB
Y8066	806-896 MHz	6	9 dBd	16 dB
Y80612	806-896 MHz	12	11 dBd	20 dB
Y8963	896-970 MHz	3	6 dBd	15 dB
Y8966	896-970 MHz	6	9 dBd	16 dB
Y89612	896-970 MHz	12	11 dBd	20 dB
Y80618	806-896 MHz	18	14 dBd	25 dB
Y89618	896-870 MHz	18	14 dBd	25 dB

Black Anodized Fully Welded UHF Models

YB4505	450-470 MHz	5	9.2 dBd	20 dB
--------	-------------	---	---------	-------

Black Anodized Fully Welded 800/900 MHz Models

YB8066	806-896 MHz	6	9 dBd	16 dB
YB8966	896-970 MHz	6	9 dBd	16 dB
YB80618	806-896 MHz	18	14 dBd	25 dB
YB89618	896-970 MHz	18	14 dBd	25 dB

Replacement Mounting Kits

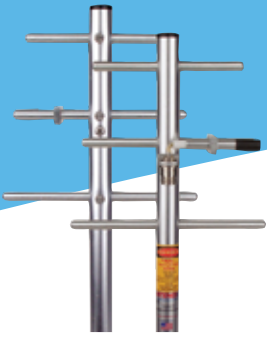
YM78	HD Mount Bracket for 7/8" Boom Yagi Accommodates up to 2-13/32" Diameter Boom
YM78HD	HD Yagi Mounting Kit for 7/8" Boom
YM100HD	HD Yagi Mounting Kit for 1" Boom
YM125HD	HD Mount Bracket for 1-1/4" Boom Yagi Accommodates up to 2-13/32" Diameter Boom

Silver Series VHF Models

YS1363	136-150 MHz	3	7.1 dBd	17 dB
YS1503	150-174 MHz	3	7.1 dBd	17 dB
YS1505	150-174 MHz	5	9.2 dBd	20 dB
YS2165	216-225 MHz	5	9.2 dBd	20 dB
YS2203	220-250 MHz	3	7.1 dBd	17 dB
YS2205	220-250 MHz	5	9.2 dBd	20 dB

Directional Yagis

- 360° Fully Welded Gold Anodized models or value leader Silver Series available
- Line up includes 3 element/7.1 dBd gain to 18 element/14 dBd gain variations
- Internal matching design will not ice up, detune, or corrode
- VHF Custom tuning available



Silver Series Yagis

- Broad bandwidth allows gain performance to be more consistent through the frequency range

Model	Frequency	Elements	Gain	Front-Back Ratio
Silver Series UHF Models				
YS4063	406-430 MHz	3	7.1 dBd	17 dB
YS4065	406-430 MHz	5	9.2 dBd	20 dB
YS4303	430-450 MHz	3	7.1 dBd	17 dB
YS4305	430-450 MHz	5	9.2 dBd	20 dB
YS4306	430-450 MHz	6	10.2 dBd	20 dB
YS43012	430-450 MHz	12	11 dBd	20 dB
YS4503	450-470 MHz	3	7.1 dBd	17 dB
YS4505	450-470 MHz	5	9.2 dBd	20 dB
YS4506	450-470 MHz	6	10.2 dBd	20 dB
YS45012	450-470 MHz	12	11 dBd	20 dB
YS47012	470-490 MHz	12	11 dBd	20 dB
YS4906	490-512 MHz	6	10.2 dBd	20 dB

Silver Series 800/900 MHz Models

YS8063	806-896 MHz	3	6 dBd	15 dB
YS8066	806-896 MHz	6	9 dBd	16 dB
YS80612	806-896 MHz	12	11 dBd	20 dB
YS8963	896-970 MHz	3	6 dBd	15 dB
YS8966	896-970 MHz	6	9 dBd	16 dB
YS89612	896-970 MHz	12	11 dBd	20 dB

Model	Description	Gain	Front-Back Ratio
-------	-------------	------	------------------

Enclosed 2.4 -4.9 GHz Models

YE24006	2.4-2.5 GHz	11.2 dBi	20 dB
YE24007	2.4-2.5 GHz	12.7 dBi	20 dB
YE240015	2.4-2.5 GHz	15 dBi	20 dB
YE525012	5.25-5.35 GHz	14.5 dBi	20 dB
YE5490012	4.9-5.8 GHz	14.5 dBi	20 dB

Antenna Masts

YMST4	4'x1-1/4" OD x .065" wall alum. mast
YMST8	8'x1-1/4" OD x .065" wall alum. mast
YMST18	18'x1-1/4" OD x .065" wall alum. mast (2p)

Yagi Accessories

LAIL350NN	Trapper Inline Lightning Arrestor N to N
LABH350NN	Trapper Bulk Head Lightning Arrestor N to N
LABH2400NN	Trapper Bulkhead Lightning Arrestor N to N
CCT213	Crimp Tool For ATX400
CN400	N Connector For ATX400
R400100	100 ft. Roll of ATX400
R400500	500 ft. Roll of ATX400
IASFST	36 ft. Roll of MOCAP Installation Tape
IASFST10	Six pack of 10" strips of MOCAP Installation Tape

Enclosed Yagi

- 2.4 GHz is completely sealed and is strong enough for outdoor use
- 15 dBi high gain moves your lower power ISM or WLAN signal from point to point with minimal signal loss



YE240015
Enclosed Yagi



Trapper™
Lightning Arrestor