

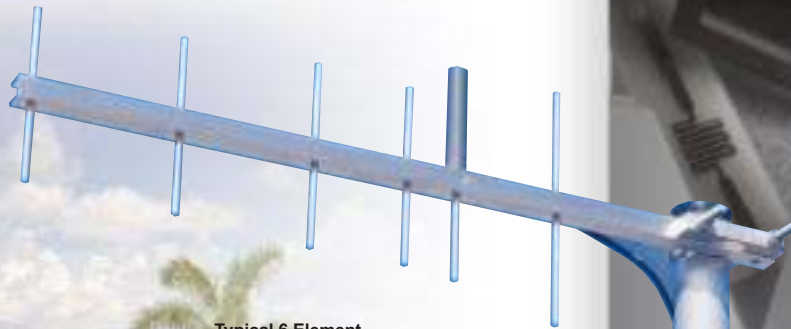
800/900 MHz Yagis

800 MHz Models - ESMR, SMR, Cellular, GSM and Conventional

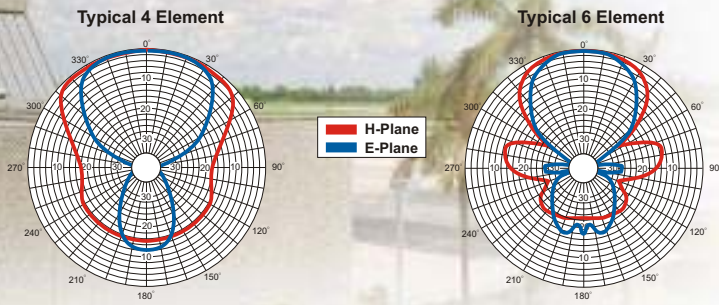
For 800 MHz ESMR and SMR or conventional applications, choose 4 element PC804N, 6 element PC806N or ten element PC8010N. The Cushcraft PC804N, PC826N and PC8210N are also available in the the 900 MHz GSM frequency band.



PC804N



PC806N



All-welded design eliminates electrical noise.

800 MHz PC Yagis

- ¥ All-welded unit construction
- ¥ No adjustments ever needed
- ¥ Waterproof design
- ¥ Stainless steel hardware
- ¥ Pigtail mounted N-female connector

800/900 MHz YAGI SELECTOR GUIDE

Model	Freq. MHz	Gain dBd	No. Elem	F to B -3dB Beamwidth			Conn. Type	W/ surf. Area ft ² (m ²)	W/ surf. W/ mph (kph)	W/ 1/2" lce	Length in (cm)	Wt. lb. (kg)
				F to B	-3dB	Beamwidth						
PC9013N	902-928	13	13	20	35	40	N	0.46 (0.043)	125 (200)	100 (161)	53-1/2 (135.9)	3.12 (1.40)
PC9010N	928-960	12	10	20	40	45	N	0.38 (0.035)	125 (200)	100 (161)	41-7/16 (105.2)	2.31 (1.04)
PC926N	928-960	8.5	6	18	55	65	N	0.26 (0.024)	125 (200)	100 (161)	24-3/4 (62.9)	1.61 (.72)
PC904N	896-980	6	4	15	70	100	N	0.11 (0.01)	125 (200)	100 (161)	13 (33)	1.12 (.50)
PC906N	896-940	8.5	6	18	55	65	N	0.26 (0.024)	125 (200)	100 (161)	24-3/4 (62.9)	1.62 (.73)
PC8910N	896-940	11	10	20	40	45	N	0.38 (0.035)	125 (200)	100 (161)	41-7/16 (105.2)	2.31 (1.04)
PC886N	880-960	8.5	6	18	55	65	N	0.26 (0.024)	125 (200)	100 (161)	24-3/4 (62.9)	1.69 (.76)
PC884N	880-960	6	4	15	70	90	N	0.11 (0.01)	125 (200)	100 (161)	13 (33)	1.12 (.50)
PC8210N	824-896	11	10	20	40	45	N	0.38 (0.035)	125 (200)	100 (161)	46 (116.8)	2.37 (1.07)
PC8010N	806-869	11	10	20	40	45	N	0.38 (0.035)	125 (200)	100 (161)	46 (116.8)	2.44 (1.10)
PC804N	806-902	6	4	15	70	90	N	0.11 (0.01)	125 (200)	100 (161)	13 (33)	1.12 (.50)
PC806N	806-866	8.5	6	18	55	65	N	0.26 (0.024)	125 (200)	100 (161)	24-3/4 (62.9)	1.69 (.76)
PC826N	824-896	8.5	6	18	55	65	N	0.26 (0.024)	125 (200)	100 (161)	24-3/4 (62.9)	1.67 (.75)

Common Specifications:

Power handling - 200 Watts;
 Elements - 1/4 in. (.63 cm) 6061T6 aluminum rod; Boom - 3/4 in (1.9 cm) 6061T6 aluminum channel;
 Mounting style - U-bolt; Maximum mast diameter - 2-1/8 in (5.4 cm), Pigtail -19 in (48.3 cm)